

Scotsman®

Ice Systems

Ice the world demands



EUROPE

Europe, Africa and Middle East
Scotsman Ice Systems
Frimont S.p.A. - Via Puccini, 22
20010 Pogliano Milanese - Milan - Italy
Ph: +39-02-93960208 - Fax: +39-02-93960201
scotsman.europe@frimont.it

USA

USA, Canada, Latin America
Scotsman Ice Systems USA
775 Corporate Woods Parkway
Vernon Hills, IL 60061
Ph: +847-215-4550 - Fax: +847-913-9844
customer.service@scotsman-ice.com



www.scotsman-ice.it
www.scotsman-ice.com
www.scotsman-ice-on-tablet.com

Certified ISO 9001:2000



6 Series: a range of eight Scotsman Gourmet Ice Makers.

CHINA

Scotsman Ice Systems (Shanghai) Co., Ltd.
Room 2505, Building 2
20 Xuhong Middle Road, Xuhui District
Shanghai China 200235
Main line: +86-21-6131 3205/3200
Fax: +86-86-21 6131 3330
Mobile: +86-13764342320
sales@scotsman-china.com
service@scotsman-china.com

ASIA AND PACIFIC

Scotsman Industries (S) PTE. LTD.
1 Commonwealth Lane #09-22
One Commonwealth
Singapore 149544
Ph: +65-6738-5393 - Fax: +65-6738-1959
scotsman@scotsman.com.sg

MIDDLE EAST & NORTH AFRICA

Scotsman-Frimont Regional Office (ME&NA)
POBox: 42026, Sharjah, UAE
HFZA Bonded Warehouse No. 1k-10/1
Ph: +9716-5262-944/945
Fax: +9716-5262-946
Mob. Ph.+971-505-505-980
Skype: mdawood331393
m.dawood@frimont.ae
fernando.m@frimont.ae

SOUTH AFRICA

Scotsman Ice Systems SA (Pty) Ltd
P.O. Box 44 - Riverclub - 2149
Lakeview Business Park
Unit 4, 8 - 10 Yaldwyn Road
Jeppestown, Boksburg
Ph: +27-11-826-6742/1 - 087-720 0245/6/7/8
Fax: +27-11 826 4123 - + 086-634-0803
stuart@scotsmansa.co.za
jennifer@scotsmansa.co.za

SPAIN

Scotsman España, S.L.U. - c/ Galapagar, 12
Poligono Industrial Ventorro del Cano
28925 Alcorcon (Madrid)
Ph: +34-91-1109796 - Fax: +34-91-6337423
E-mail: scotsman@scotsman-espana.es
www.scotsman-espana.es

INDIA

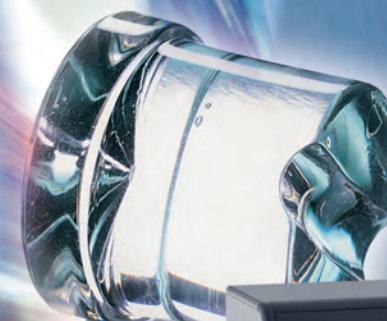
Scotsman Group India
Gurgaon One Complex - GT1-5A
Sector 22, Old Gurgaon/Jaipur Rd
Haryana, 122015 - India
Tel.: +91-124-4002459
direct +91- 9560072459
david.owen@scotsman.com.sg

Distributed by:

10/2013 Specifications may be subject to change without notice.

Scotsman®

Ice Systems



3 years
warranty!



6 Series

Distinctly the Industry Benchmark

6 Series: the evolution of ice makers.

To serve the **perfect drink**

ice cubes should be crystal clear, hard and slow melting. Only the Scotsman Gourmet ice cubes will do: they will last in the glass longer than the time needed to finish the drink, with less flavour dilution and greater customer satisfaction.

Ice cubes "with a hole" in, crushed ice and/or cubelet ice, all have their ideal applications, but they will melt faster due to their increased heat exchange surface area.



Small Gourmet
8 g
Ø 21 x H 25 mm

Medium Gourmet
20 g
Ø 30 x H 34 mm

Large Gourmet
39 g
Ø 38 x H 41 mm

Scotsman has revisited the concept of self-contained ice makers in order to solve some of the problems concerning "space", "size" and "ease of use". The new 6 Series has reduced dimensions in order to allow better positioning of the ice maker to better suit your needs. Most models will fit under the counter, bringing ice directly to your point of sale. Drainage problems can easily be overcome with Scotsman revolutionary PWD system, or "Progressive Water Discharge", built into the 6 Series EC range. The ratio between daily ice production and storage capacity has been optimised to allow greater instant ice availability. We are making a simple thing like water turn into crystal clear, pure, hard and most importantly ...profitable ice cubes.

Join the Scotsman revolution now! You will discover the new, patented revolutionary features that make every Scotsman ice maker easy to use, safe and reliable.



Ice "Shot Glass" Cube

*Only from AC/EC 206 ICE SHOT (Gourmet XL cubes - 60 g)

Note: max. production capacity measured at 10°C ambient and 10°C water.



AC / EC 46
Max. production Kg 24,5
Storage capacity Kg 9



AC / EC 56
Max. production Kg 32,5
Storage capacity Kg 12,5



AC / EC 86
Max. production Kg 39
Storage capacity Kg 19



AC / EC 106
Max. production Kg 50
Storage capacity Kg 23



AC / EC 126
Max. production Kg 74
Storage capacity Kg 39



AC / EC 176
Max. production Kg 85
Storage capacity Kg 48



AC / EC 206
Max. production Kg 137
Storage capacity Kg 50



AC / EC 226
Max. production Kg 150
Storage capacity Kg 70



on parts against manufacturing defects,
according to Scotsman Warranty Policy
as administrated
by your local Scotsman Dealer

Scotsman
Ice Systems

Our unique features...

Guaranteed Quality.



Storage bin antibacterial pouch & holder.



Hygienic scoop holder.

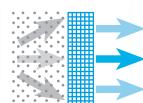
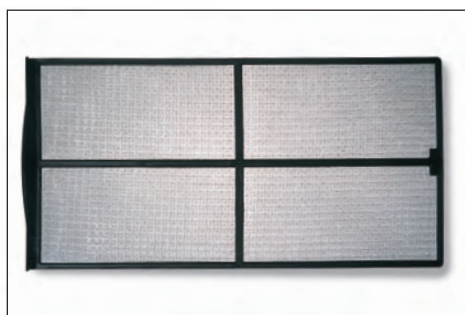


Visual Alarm for scheduled routine maintenance.



Front panel ON-OFF switch.

Proximity condenser air filter.



The new Scotsman 6 Series features two models whose smaller dimensions bypass most space constraints, easily allowing for under counter installation. **Just the Scotsman Ice machines you were looking for!** The Range now meets and in most cases exceeds the 50% rule... when it comes to the ratio between daily output and storage bin capacity. The machines rounded corners offer stylish and eye catching appeal and ease routine cleaning procedures. The machines rounded corners offer stylish and eye catching appeal, while easing routine cleaning procedures.

The bin door has also been redesigned with the same rounded look, slides easily on its runners, softly closing on two rubber inserts. The front panel of the ice maker lends itself to merchandising "slogans", should you so desire it. The Ice Scoop sits in a specially designed holder just inside the storage bin, in order to facilitate and safeguard hygienic conditions. The On/Off switch is conveniently situated on the front panel; alongside this is an alarm indicator (red light) in order to warn of dust build up on the condenser air-filter. This alarm also alerts the operator that the ice maker is due for a routine clean... how clever is that!! Other useful warning lights inform of problems with refrigerant gas temperature, faulty probes and the water pump (PWD system). Positioned on the inside of the sliding door, is the holder for the anti-microbial pouch. This pouch contains an efficient food safe agent, that emits an invisible vapour which coats the inside of the storage bin area, which helps to prevent the build up of bacterial matter. This maintains the hygiene of the ice in the storage bin, and should be changed on a monthly basis.

The design and positioning of the condenser air-filter is one of the many revolutionary features of the 6 Series. The filter is positioned directly in front of the condenser, thus stopping the build up of dust; the filter is easily accessible and can be clean and repositioned in a matter of minutes.

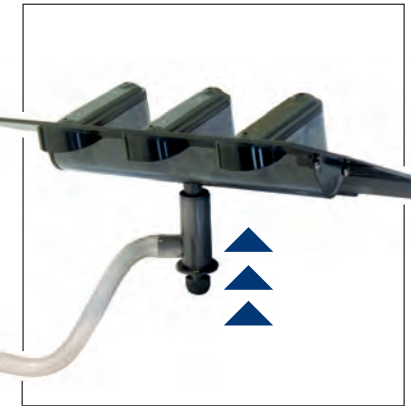
The patented Anti-Scale System is also unique: a cavity has been created beneath the water pump, whereas the movement of the water created by the pump in conjunction with the sharp temperature drop allow for most water residual minerals to separate from the water as ice is formed and gather in the rubber cap cavity placed underneath.

The operator can easily remove the rubber cap and wash away any minerals on regular bases, thus preventing them entering back into the water system. Removing the rubber cap also allows easy access to the water pump filter for routine cleaning.

The Spray bar and water connections are also easily accessible and can be taken apart and removed thanks to the newly designed "quick release fitting". This also allows for easy cleaning and simple re-assembly.

The **PWD system (Progressive Water Discharge)** is now offered as standard on the EC series (simply, AC models change their denomination into EC when equipped with the PWD System), allows for residual water to be pumped away rather than using gravity. It's ideal where the drain is higher than the base of the machine. This means that you can position the Ice Maker virtually anywhere, and any potential drainage related restrictions are resolved.

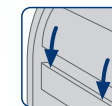
Spray bar quick disconnect.



Patented Anti-Scale System.



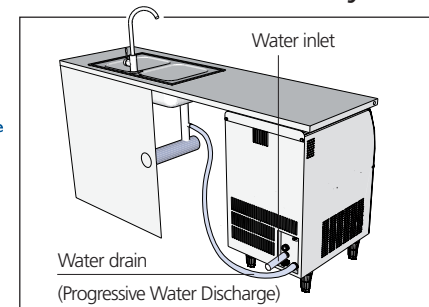
Noiseless bin door.



Merchandising front panel.



The exclusive PWD Scotsman System.



Technology

Anti-bacterial system in the ice bin
Multiple species of microbes are part of every environment in varying proportions. Scotsman helps prevent their proliferation beyond tolerated limits. The use of an efficient, food-safe antimicrobial agent, contained in a pouch positioned on the inner side of the sliding bin door, creates a barrier against the potential nesting and subsequent proliferation of these micro-organisms. This pouch releases a vapour that creates an invisible "film" on the surface of the bin, on the scoop and on the ice. To safe-guard the efficiency of the system, the pouch needs replacement on a monthly basis.

Hygienic scoop-holder
The best way to prevent contamination of ice is to avoid bacteria proliferation on the surfaces in contact with the cubes. The same is true for the ice-scoop. It is paramount to have a safe and clean location to place it after use. The scoop-holder is now positioned inside the bin, in a safe environment, so the scoop is always at hand for quick and hygienic collection of ice. Scotsman is proud to offer AquaArmor™ in most of its models, utilising AgION™ a silver-based anti-microbial compound.

Patented Anti-Scale System
One of the many Scotsman Patents, the Anti-Scale System allows for an easy, quick and efficient manual disposal of most of the residual minerals that are the natural side effect of water circulation in a closed system. The advantage the system brings is to prevent and reduce problems arising from scale accumulation into the water circuit. Scale removal provides a higher quality of cube and reduces routine maintenance.

Ice bin capacity increased to 50% of daily production
The bin capacity is fundamental to the correct choice of ice machine. Typically ice consumption is not constant throughout the day, so it is advisable to opt for a size of ice bin capable of meeting subsequent peak demands. An ice bin that holds 50% of the total daily output of the unit is the ideal choice, a choice that in most cases allows the user to meet all ice requirements throughout the working day.

Condenser Air Filter
In order to preserve the efficiency of the ice Production system, the condenser air filter must be kept free from dust accumulation. Scotsman 6-Series air-cooled machines feature an air filter housed right in front of the condenser to catch any flying particle of dust. Highly efficient and user-friendly, the filter can easily be removed from the front side of the unit. Also, the "clean me" light blinks to notify the Operator when the filter needs cleaning. Removing the filter and washing it under a tap is a one-minute job!

ESS - Energy Saving System
The ESS system optimises the efficiency of the production cycle, improving the quality of the ice and reducing operating costs.

AgION - Scotsman is proud to offer (in most of its models) AgION™ a silver-based anti-microbial compound that reduces the growth of bacteria, microorganisms, algae, mold and slime on ice machine surfaces. This innovation makes available to Scotsman customers a specific, reliable, and durable technology against ice microbial contamination, feature which is to be appreciated especially in this day-and-age: hygiene cannot be compromised!

PWD - Progressive Water Discharge
Unique PWD (Progressive Water Discharge) by Scotsman. It solves all your drainage height or distance problems. Place your ice maker just where you need it, up to 15 meters away, and as low as 1.7 meters lower than the actual drain outlet. And keep your ice away from algae or microbes easily growing in stagnant drain water. PWD is standard on all EC Easy Fit line models. (Not available on MC version).